



Safety protection, to make a better world
www.techwin.com



Shenzhen Techwin Lightning Technologies Co., Ltd. founded in 2006, locates in Shenzhen, China. Techwin is a high-tech enterprise engaged professionally in research, production, and sales of lightning protection products worldwide. Our main products include AC/DC surge protector, signal arrester, antenna coaxial protector etc.

Techwin manufactures a variety of OEM & ODM Surge Suppression solutions. Designed to meet customer requirements and/or work within customer's existing equipment. Our OEM suppressors offer high quality surge suppression solutions. Our annual output for AC/DC power arrester is around 50,000 sets, signal arrester and antenna coaxial protector is about 100,000 sets separately.

Our R&D department is run by some of the country's leading experts in the field with rich experience in the manufacturing and design of lightning protection device.

Our Quality Service: In order to meet the customer's demand and provide quality service, Techwin persists "QUALITY FIRST, CUSTOMER FIRST" policy. Our products are manufactured according to international and domestic standards and under most strict quality standards on ISO9001.

Our Mission: satisfy our customers by delivering products of highest quality, with the best available price and within most timely period.

Our After-sale Service: we provide customer service and technical support through a comprehensive warranty program. Additionally, as part of our customer service and technical support, our staff of dedicated engineers is available to assist you with custom designs for unique projects and applications. We ensure that all products are accepted by authorities.

Our Added Value: our experience and expertise is our value and your best guarantee.

Address: 3/F, 2nd Building, Chaguang Industrial Park, Nanshan, Shenzhen, GD, China
Tel: +86-755-86215101
Fax: +86-755-86131076
P.C: 518055
E-mail: techwin@techwin.com

www.techwin.com

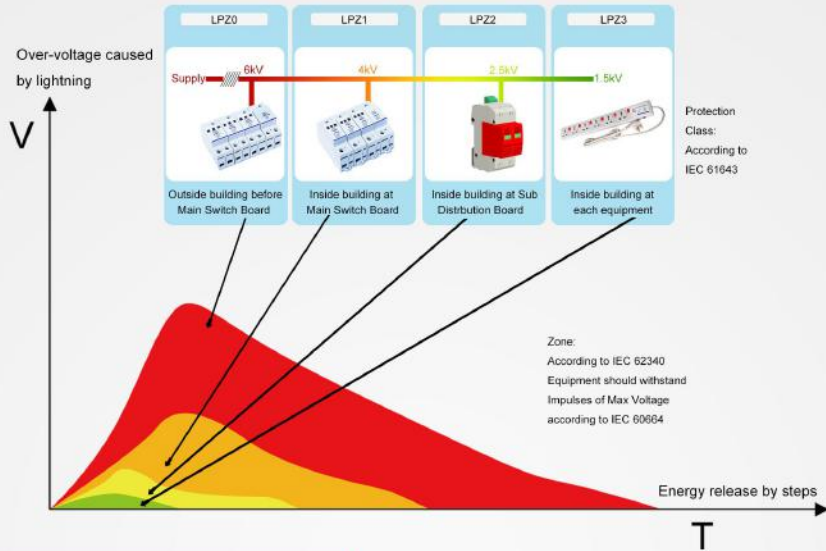


Lightning protection solutions

Shenzhen Techwin Lightning Technologies Co.,Ltd



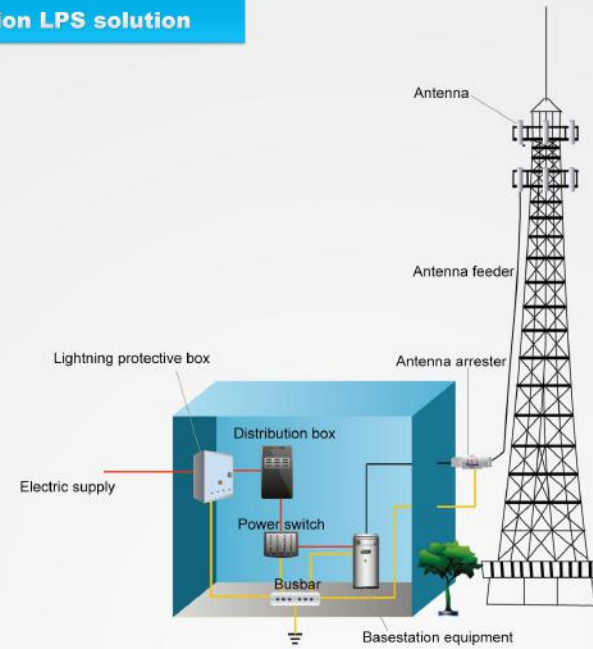
Power system LPS solution



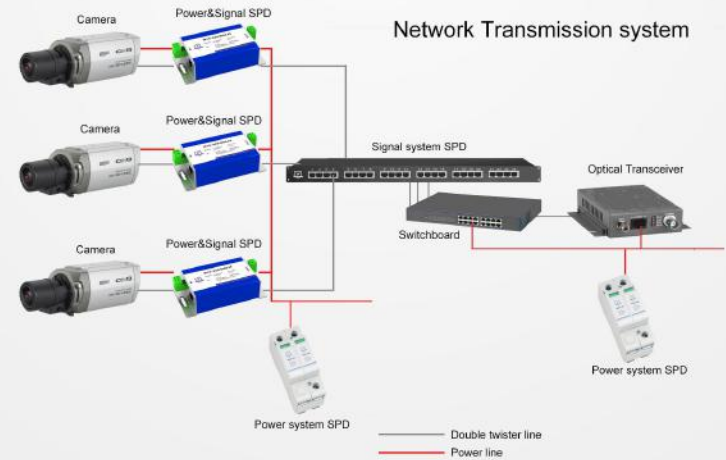
Monitoring system SPD solution



Base-station LPS solution



Monitoring system SPD solution



SPD for power system

• Spark gap



Model	Un	Iimp	Up ^(10/350µs,20kA)	Protection mode
MG100B	220/380V	25kA	3.5KV	L /N-PE
MG50B	220/380V	50kA	3.5KV	L /N-PE
MG25B	220/380V	25kA	3.5KV	L /N-PE

• Lightning protective box



Model	Un	Uc	I _{max}	I	Up ^(10/350µs,20kA)	Protection mode
B120B4	220/380V	385V	120kA	—	1.5KV	L1/ L2/L3/N-PE
B120B3+N	220/380V	385V	120kA	—	1.5KV	L1/ L2/L3-N,N-PE
B100B4	220/380V	385V	100kA	—	1.5KV	L1/ L2/L3/N-PE
B100B3+N	220/380V	385V	100kA	—	1.5KV	L1/ L2/L3-N,N-PE
B100L6B3+N	220/380V	385V	100kA	63A	1.1KV	B+C,L1/L2/L3-N,N-PE
B80L32B3+N	220/380V	385V	80kA	32A	1.1KV	B+C,L1/L2/L3-N,N-PE

• AC module



Model	Un	Uc	I _{max}	Up ^(10/350µs,20kA)	Protection mode
M100B4	220/380V	385V*	100kA	1.5KV	L1/ L2/L3/N-PE
M100B3+N	220/380V	385V*	100kA	1.5KV	L1/L2/L3-N,N-PE
M100B2	220/380V	385V*	100kA	1.5KV	L/N-PE
M100B1+N	220/380V	385V*	100kA	1.5KV	L-N,N-PE
M100B	220/380V	385V*	100kA	1.5KV	L/N-PE
M80B4	220/380V	385V*	80kA	1.5KV	L1/ L2/L3/N-PE
M80B3+N	220/380V	385V*	80kA	1.5KV	L1/L2/L3-N,N-PE
M80B2	220/380V	385V*	80kA	1.5KV	L/N-PE
M80B1+N	220/380V	385V*	80kA	1.5KV	L-N,N-PE
M80B	220/380V	385V*	80kA	1.5KV	L/N-PE
M60B4	220/380V	385V*	60kA	1.5KV	L1/ L2/L3/N-PE
M60B3+N	220/380V	385V*	60kA	1.5KV	L1/L2/L3-N,N-PE
M60B2	220/380V	385V*	60kA	1.5KV	L/N-PE
M60B1+N	220/380V	385V*	60kA	1.5KV	L-N,N-PE
M60B	220/380V	385V*	60kA	1.5KV	L/N-PE
M40B4	220/380V	385V*	40kA	1.5KV	L1/ L2/L3/N-PE
M40B3+N	220/380V	385V*	40kA	1.5KV	L1/L2/L3-N,N-PE
M40B2	220/380V	385V*	40kA	1.5KV	L/N-PE
M40B1+N	220/380V	385V*	40kA	1.5KV	L-N,N-PE
M40B	220/380V	385V*	40kA	1.5KV	L/N-PE

*Uc selectable among 150V, 275V, 320V, 385V and 440V.

• DC module

Model	Un	Uc	I _{max}	Up ^(10/350µs,20kA)	Protection mode
M40-220	220VDC	275V	40kA	0.9KV	+/- —PE
M40-48	48VDC	85V	40kA	0.25KV	+/- —PE
M10-24	24VDC	30V	10kA	0.10KV	+/- —PE

• Socket outlet



Model	Standard	Voltage	Max total current	I _{max}	Output port
PDU-10D-6	DIN49440	250V	10-32A	10kA	6-45 ports
PDU-10C13-6	IEC320	250V	10-32A	10kA	6-45 ports

Signal SPD

• Audio protector



Model	Uc	I _{max}	Vs	Connector	Number of ports
D180R2	180V	5kA	10Mbps	RJ11	1
D180R4	180V	5kA	10Mbps	RJ11	1
D180R2-16	180V	5kA	10Mbps	RJ11	16
D180R2-24	180V	5kA	10Mbps	RJ11	24
D180Y2-10	180V	5kA	10Mbps	PTB	10

• Data line protector



Model	Uc	I _{max}	Vs	Connector	Protect line	Number of ports
D05J4	5V	5kA	100M	RJ45	1/2,3/6	1
D05J8H	5V	5kA	1000M	RJ45	1-8	1
D05J8H-8	5V	5kA	1000M	RJ45	1-8	8
D05J8H-16	5V	5kA	1000M	RJ45	1-8	16
D05J8H-24	5V	5kA	1000M	RJ45	1-8	24
D05J4-4	5V	5kA	100M	RJ45	1/2,3/6	4
D05J4-8	5V	5kA	100M	RJ45	1/2,3/6	8
D05J4-16	5V	5kA	100M	RJ45	1/2,3/6	16
D05J4-24	5V	5kA	100M	RJ45	1/2,3/6	24

• Control line protector



Model	Uc	I _{max}	Vs	Connector	Protect line
D12Y2	12V	5kA	10Mbps	Pluggable terminal blocks	1,2
D12Y4	12V	5kA	10Mbps	Pluggable terminal blocks	1,2,3,4
D24Y2	24V	5kA	10Mbps	Pluggable terminal blocks	1,2
D24Y4	24V	5kA	10Mbps	Pluggable terminal blocks	1,2,3,4

• Video line protector

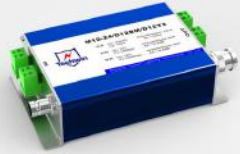


Model	Uc	I _{max}	Vs	Connector	Number of ports
D12BM	12V	5kA	100Mbps	BNC	1
D12BM-4	12V	5kA	100Mbps	BNC	4
D12BM-8	12V	5kA	100Mbps	BNC	8
D12BM-16	12V	5kA	100Mbps	BNC	16
SDI-1	12V	5kA	1.5/3.0G	BNC	1

• POE protector



Model	Power			Ethernet			
	Un	I _{max}	Protect line	Un	I _{max}	Vs	Protect line
POE5-48	48V	5kA	4/5,7/8	48V	5kA	100M	1/2,3/6
POE5-48-8	48V	5kA	4/5,7/8	48V	5kA	100M	1/2,3/6
POE5-48-16	48V	5kA	4/5,7/8	48V	5kA	100M	1/2,3/6
POE5-48-24	48V	5kA	4/5,7/8	48V	5kA	100M	1/2,3/6
POE5-48-OD	48V	5kA	4/5,7/8	48V	5kA	100M	1/2,3/6
POE6-48	48V	5kA	1-8	48V	5kA	1000M	1-8
POE6-48-8	48V	5kA	1-8	48V	5kA	1000M	1-8
POE6-48-16	48V	5kA	1-8	48V	5kA	1000M	1-8
POE6-48-24	48V	5kA	1-8	48V	5kA	1000M	1-8
POE6-48-OD	48V	5kA	1-8	48V	5kA	1000M	1-8



• Monitor lightning arrester

Model	Power line		Signal line					
	Un	I _{max}	Video	Uc	Control	Data	I _{max}	V _s
M10-12/D12BM	12V	10kA	12V				5kA	100M
M10-12/D12Y2	12V	10kA			12V		5kA	10M
M10-220/D05J4	220V	10kA				5V	5kA	100M
M10-24/D12BM/D12Y2	24V	10kA	12V	12V			5kA	100M
M10-220/D12BM/D12Y2	220V	10kA	12V	12V			5kA	100M
SDI-3	220V	10kA	12V	12V			5kA	1.5/3.0G

Antenna Protector



Model	Working Frequency	Uc	I _{max}	Connector
R30N70F	0-3.0G	70V	10kA	N-J/K
R25D70F	0-2.5G	70V	10kA	DIN-J/K
R25F70F	0-2.5G	70V	10kA	F-J/K
R25T70F	0-2.5G	70V	10kA	TNS-J/K
R25S160F	0-2.5G	160V	10kA	SMA-J/K
R22NW-1/4	0.75-2.2G		20kA	N-J/K
R05NW-1/4	0.4-0.5G		20kA	N-J/K
R58NW-1/4	5.5-5.8G		20kA	N-J/K
R60NW-1/4	2.3-6.0G		20kA	N-J/K
R27DF-1/4	0.8-2.7G		20kA	DIN-J/K

New energy power system



• PV junction/distribution box

Type	Model	Input	Output	Un	I	I _{max}
PV junction box	SDDL-16-1	16	1	1000VDC	160A	40kA
PV junction box	SDDL-12-1	12	1	1000VDC	160A	40kA
PV junction box	SDDL-8-1	8	1	1000VDC	160A	40kA
PV junction box	SDDL-6-1	6	1	1000VDC	160A	40kA
PV distribution box	SDDL-II-DC-6-500	6	1	1000VDC	1250A	40kA
PV distribution box	SDDL-II-AC-3-500	3	1	380VDC	1250A	40kA



• AC/DC Model

Type	Model	Un	Uc	I _{max}	U _p (300kV/20kA)	Protection mode
PV system SPD	M40-1000	1000V	1200V	40kA	3000V	+/- —PE
PV system SPD	M40-800	800V	1000V	40kA	2500V	+/- —PE
Wind power SPD	M40W-690	400/690V	700V	40kA	3000V	L1/L2/L3/N-PE
Wind power SPD	M40W-400	230/400V	440V	40kA	2200V	L1/L2/L3/N-PE
Wind power SPD	M40W-230	135/230V	250V	40kA	1500V	L1/L2/L3/N-PE

Techwin's advantage

R&D: Products leading the world SPD industry trend such as PoE protector.
Customization: flexible features/configuration according to the application circumstances.

Large user group: over 10 thousand users worldwide choose Techwin SPD.
Excellent after-sale service: all Techwin product come with 5 year warranty of free maintenance



Techwin's manufacturing capability:

700,000 units/year, OEM & ODM accepted;



Techwin's testing equipment:

Techwin owns adequate testing equipment to back up R&D and QC



Compliant standard for design and testing:

IEC61643

